


# INVEST

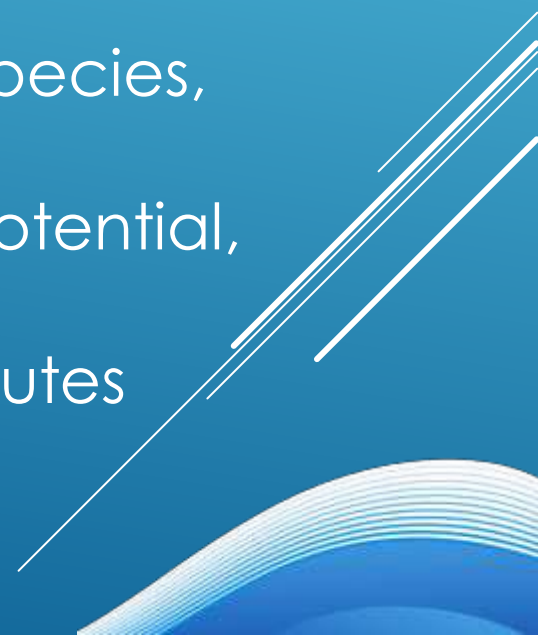
# IN ITURI



Extending over 65,658 km<sup>2</sup>, the Province of ITURI lies between 1° and 3° 4' North latitude, 28° and 31° East longitude. To the east, it has a border that measures 650 km, of which 170 km pass through Lake Albert and the Semliki River which separate it from the Republic of Uganda. To the north, it is bordered by South Sudan; to the west, the provinces of HAUT-UELE and TSHOPO; in the South, the Province of NORTH-KIVU.



# The Province of Ituri has many assets conducive to its rapid development:

- Climatic diversity which allows the exploitation of a varied range of agricultural products,
  - Diversity of natural resources that can allow the development of the industry and transport sectors,
  - Forest very rich in valuable exploitable species,
  - Rivers with considerable hydroelectric potential,
  - Important network of communication routes
- 

# Economy

The main components :

- Agriculture
- Breeding
- Fishing
- Mining
- Trade
- Industry
- Energy
- Tourism

The mining resources and potential of the Province consist mainly of gold which is found in all our territories; and many other minerals such as iron, and uranium in Irumu territory.

# THE POTENTIALITIES OF THE PROVINCE

- Mineral wealth
- Wood
- The hydroelectric potential
- The waters are abundant with fish



- Wildlife reserves and natural parks
- Rare animals (OKAPI)
- Arable land and pastures



# Potentialities | Mining and hydrocarbons

	Gold	Diamond	Iron	Silver	Oil	Uranium
Aru						
Mahagi						
Djugu						
Irumu						
Mambasa						

**INVEST**

**IN ITURI**



# Potentialities | Planned projects

In progress :

1. Budana 2 dam for 10.6 MW and the 4 MW photovoltaic plant, works to be carried out by the STS company to serve the city of Bunia.
2. Photovoltaic plant with a capacity of 10 MW, work to be carried out by the company NURU.

## BUDANA

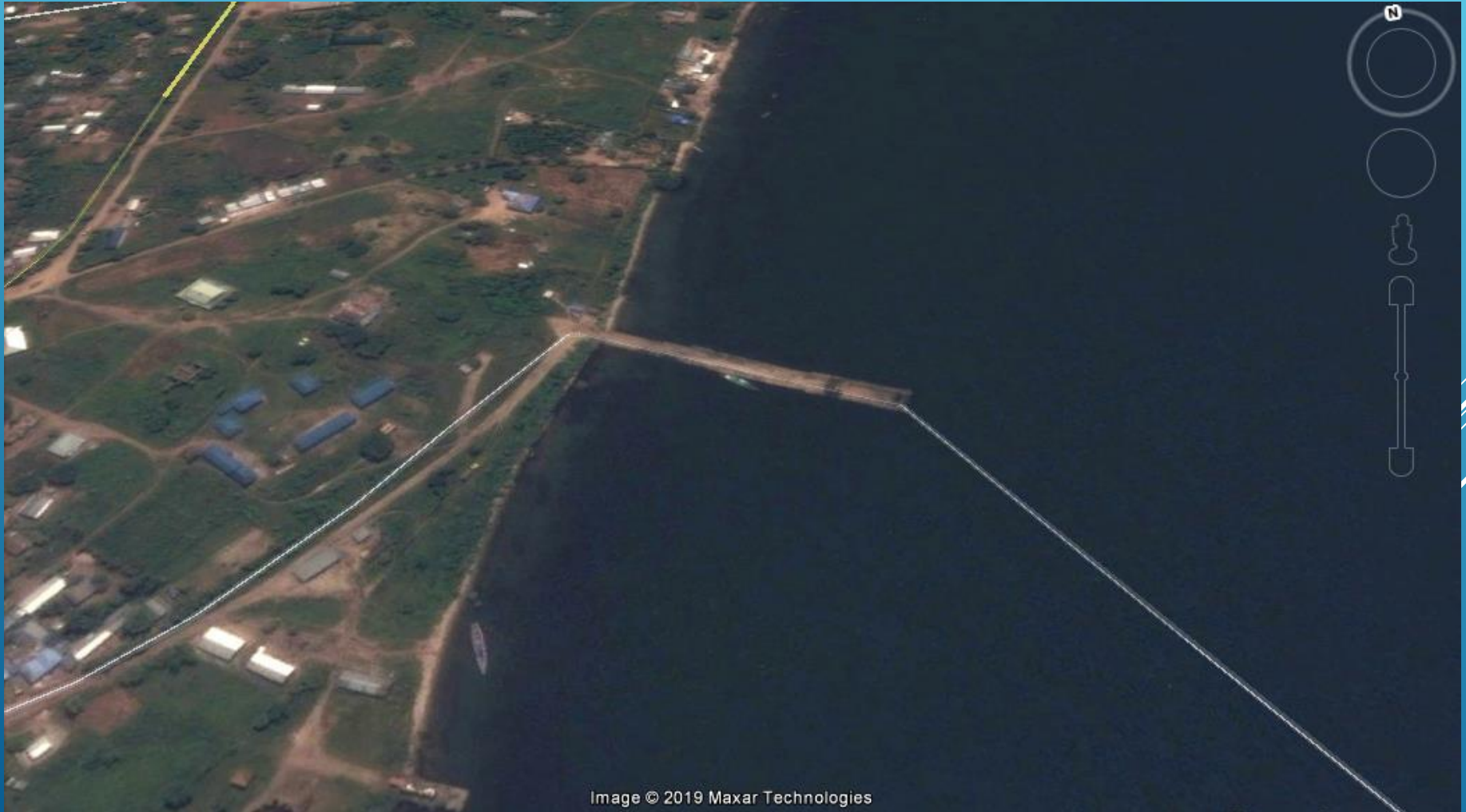


## SOLENIAMA I & II



# Potentialities | Planned projects

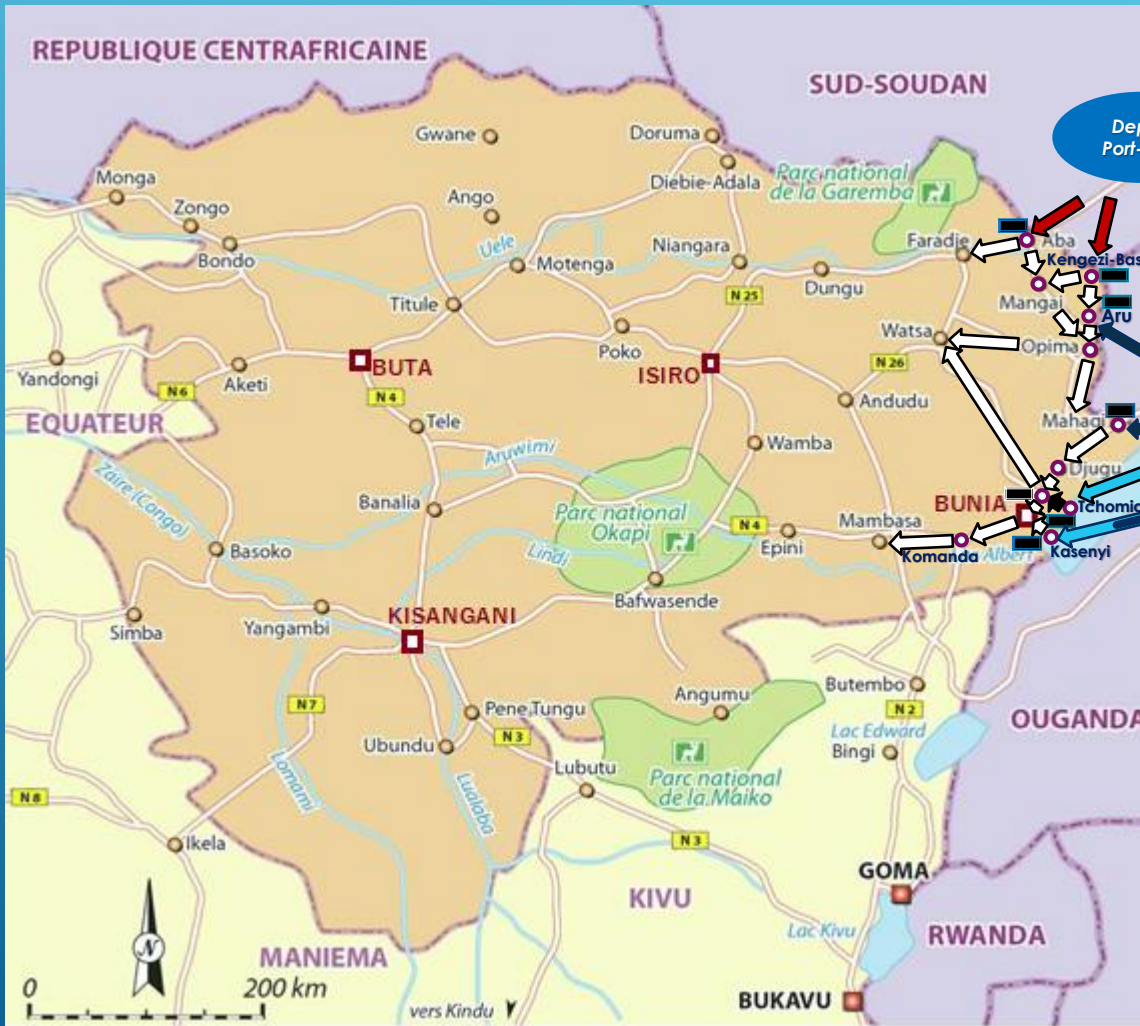
The construction and development of the ports of Mahagi-port, Tchomia and Kasenyi on Lake Albert





# Potentialities | Planned projects

## Logistics platforms / Dry ports and bus stations



### Logistics platforms at borders

#### 1. Frontière Sud-soudanaise

- ABA
- KENGEZI-BASE

#### 2. Frontière Ougandaise

- ARU
- MAHAGI
- TCHOMIA
- KASENYI

Depuis Port-Saïd

Depuis le port de Mombasa

### Internal logistics platform

- BUNIA


#### Légende des voies de transport :

- Asphalt road (in Uganda)
- Road to asphalt imperatively
- Dirt road to be paved
- Railway to rehabilitate
- River and lake routes to be marked
- Mixed road and river axis.

# Potentialities | Planned projects

## Logistics platforms / Dry ports and bus stations

### CONCEPT:

- Customs post
  - Warehouses by type of freight (high technology, classified warehouse)
  - Consolidation / unbundling docks
  - Multimodal system (rail-sea-road-air)
  - Mechanical repair shops
  - Gas station
  - Parking lot
  - IT and office automation resources.
- 

# Potentialities | Planned projects

## Industry and Agriculture

- The construction of a brewery in the city of Bunia
- The revival of the cotton, coffee, cocoa and rubber industries
- The recovery of the rice and palm oil sectors and industries



Availability of granting of agricultural concessions free of charge for any agricultural or agro-industrial project.

# PROVINCIAL GOVERNMENT POLICY

To face the challenges, four pillars each with clear objectives are identified:

**PILLAR I:** Promote good governance and consolidate peace;

**PILLAR II:** Diversify the economy, accelerate growth and promote employment;

**PILLAR III:** Improve access to social services and strengthen human capital;

**PILLAR IV:** Protect the environment and fight against climate change.

A decorative graphic consisting of several parallel white lines of varying lengths, slanted diagonally from the bottom right towards the top right, set against the blue background.

# THE PROVINCE'S DEVELOPMENT OBJECTIVES

- Objective 1** : Rehabilitate existing road infrastructure and deploy new axes;
  - Objective 2** : Ensure permanent electrification in urban and rural areas;
  - Objective 3** : Provide all social layers with access to running water;
  - Objective 4** : Protect private property (safety of economic operators);
  - Objective 5** : Ensure a secure environment (for people and their property);
  - Objective 6** : Favor public-private partnerships aimed at the integral development of the province;
- 


# BUSINESS CLIMATE IN THE PROVINCE OF ITURI


Our firm determination:

**IMPROVE THE BUSINESS CLIMATE  
AND MOBILIZE INVESTMENT**

A decorative graphic consisting of several parallel white lines of varying lengths, slanted diagonally from the bottom right towards the top right, located in the lower right quadrant of the slide.

# Improvement of the business climate

- Simplification of economic and commercial formalities
  - Reduction of delays in issuing administrative documents
  - Relief in tax rates
  - Transparency of administrative procedures
  - Elimination of hassles
  - Withdrawal of the authorization to open economic and commercial activities
  - Reduction and standardization of authentication costs
  - Elimination of technical and administrative costs of the cadastre
- 

- Organization of promotional missions for the Province;
  - Creation of a one-stop-shop for building permits;
  - Airport reception and protocol facilitation program;
  - Establishment of banks in all economically viable entities;
- 



# Improvement of the business climate

## Support for reforms decided at national level

- Steering Committee for the Improvement of the Business and Investment Climate (CPCAI)
  - Creation of a Single Window for Enterprises
  - Extractive Industries Transparency Initiative (EITI)
  - National Secretariat for Capacity Building (SENAREC)
- 

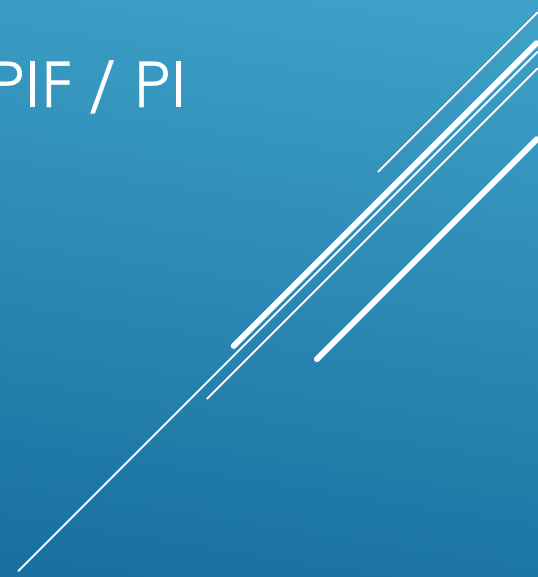
# Improvement of the business climate

## Creation of the Provincial Committee for the Facilitation of Investments

- a. Quick and Visible Impact Actions
  - b. Permanent private-public sector  
consultation
  - c. Promotion of business and facilitation of  
procedures
- 


# Improvement of the business climate

Establishment of the Agency for the Promotion of Investment and Financing of the Province of Ituri (APIF / PI)

- a. Global assessment (inventory)
  - b. Establishment of a legal and operational framework
  - c. Establishment of the administration of APIF / PI
- 

# Improvement of the business climate

## Establishment of Special Economic Zones

- Application of tax incentives under the current Investment Code.
  - Equal treatment between national and foreign companies.
  - No restrictions on investment and repatriation of funds.
  - A simplified business environment.
- 


# CREATION OF THE PORTFOLIO OF THE PROVINCE OF ITURI

DYNAMIZATION OF PROVINCIAL PUBLIC FINANCES / PPP.

A decorative graphic consisting of several parallel white lines of varying lengths, slanted diagonally from the bottom right towards the top right, set against a blue gradient background.

# Ituri Province Portfolio

## Creation of companies / Equity investments

- Draft framework edict of the Provincial Portfolio (Authorization)
  - Creation of provincial enterprises
    - ✓ Agricultural Development Corporation
    - ✓ Holding
    - ✓ Real estate promotion and management company
    - ✓ Logging company
- 

# Ituri Province Portfolio

## Creation of companies / Equity investments

- ✓ Agricultural Development Corporation
  - ✓ Mining and Hydrocarbon Promotion and Development Company
  - ✓ Gold refinery
  - ✓ Road toll management company
- 

# THE PROVINCE OF ITURI IS OPEN FOR BUSINESS

